

INFORMATION AND COMMUNICATION TECHNOLOGY LAB

LAB MANUAL



DEPARTMENT OF COMPUTER SCIENCE

THE ISLAMIA UNIVERSITY, BWP, PAKISTAN



Lab : Introduction to Microsoft Power Point

Objective(s) :

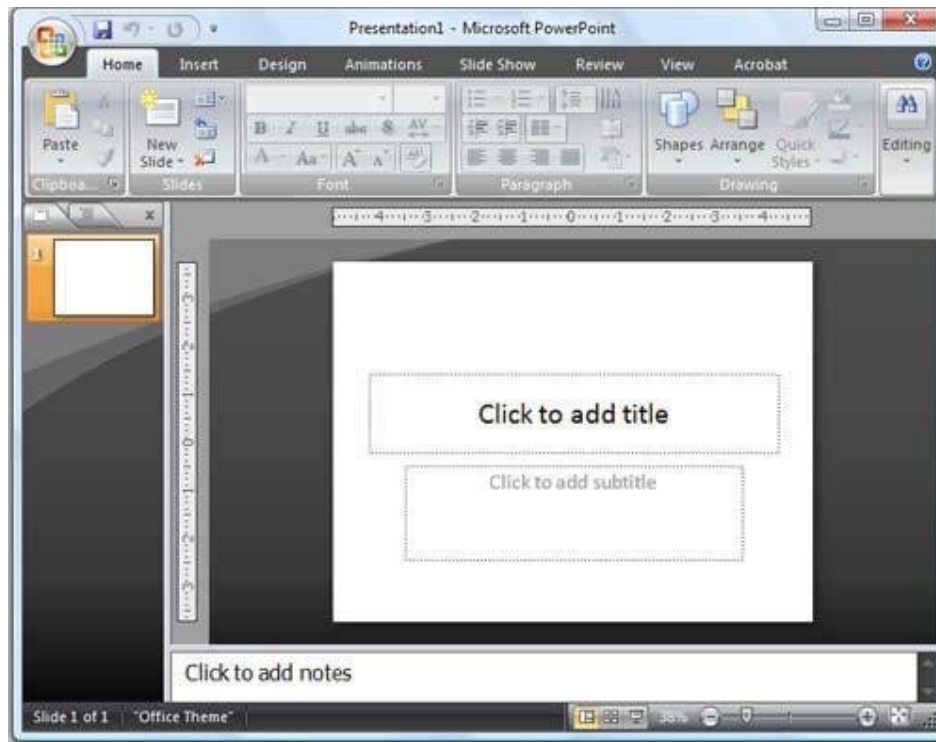
To become familiarize with the features of Microsoft Power Point.

The PowerPoint Window

PowerPoint is a presentation software package. With PowerPoint, you can easily create slide shows. Trainers and other presenters use slide shows to illustrate their presentations.

This lesson introduces you to the PowerPoint window. You use the window to interact with the software. To begin, open PowerPoint 2007. The window appears and your screen looks similar to the one shown.

Note: Your screen will probably not look exactly like the screen shown. In PowerPoint 2007, how a window displays depends on the size of the window, the size of your monitor, and the resolution to which your monitor is set. Resolution determines how much information your computer monitor can display. If you use a low resolution, less information fits on your screen, but the size of your text and images are larger. If you use a high resolution, more information fits on your screen, but the size of the text and images are smaller. Also, settings in PowerPoint 2007, Windows Vista, and Windows XP allow you to change the color and style of your windows.



The Microsoft Office Button



In the upper-left corner is the Microsoft Office button. When you click the button, a menu appears. You can use the menu to create a new file, open an existing file, save a file, and perform many other tasks.

The Quick Access Toolbar



Next to the Microsoft Office button is the Quick Access toolbar. The Quick Access toolbar provides you with access to commands you frequently use. By default, Save, Undo, and Redo appear on the Quick Access toolbar. You use Save to save your file, Undo to rollback an action you have taken, and Redo to reapply an action you have rolled back.

The Title Bar



The Title bar is located at the top in the center of the PowerPoint window. The Title bar displays the name of the presentation on which you are currently working. By default, PowerPoint names

presentations sequentially, starting with Presentation1. When you save your file, you can change the name of your presentation.

The Ribbon



1	Tabs
2	Command Group
3	Command Buttons
4	Launcher

You use commands to tell PowerPoint what to do. In PowerPoint 2007, you use the Ribbon to issue commands. The Ribbon is located near the top of the PowerPoint window, below the Quick Access toolbar. At the top of the Ribbon are several tabs; clicking a tab displays several related command groups. Within each group are related command buttons. You click buttons to issue commands or to access menus and dialog boxes. You may also find a dialog box launcher in the bottom-right corner of a group. When you click the dialog box launcher, a dialog box makes additional commands available.

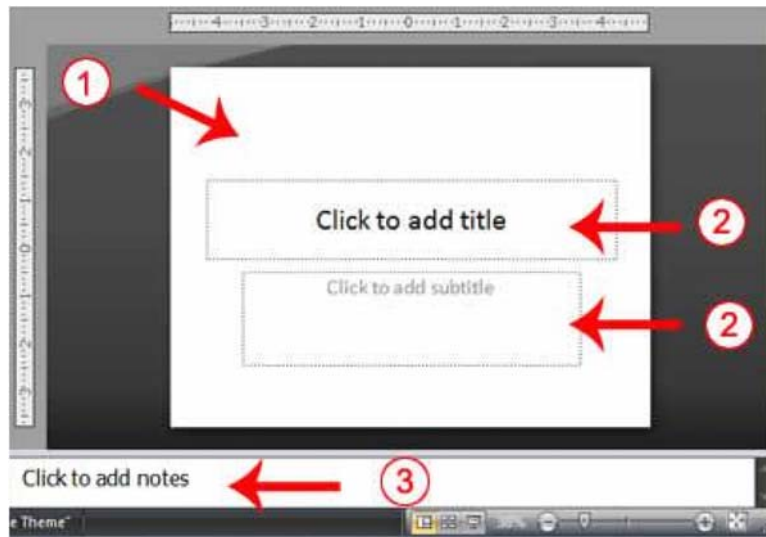
Rulers



Rulers are vertical and horizontal guides. You use them to determine where you want to place an object. If the rulers do not display in your PowerPoint window:

1. Click the View tab.
2. Click Ruler in the Show/Hide group. The rulers appear.

Slides, Placeholders, and Notes



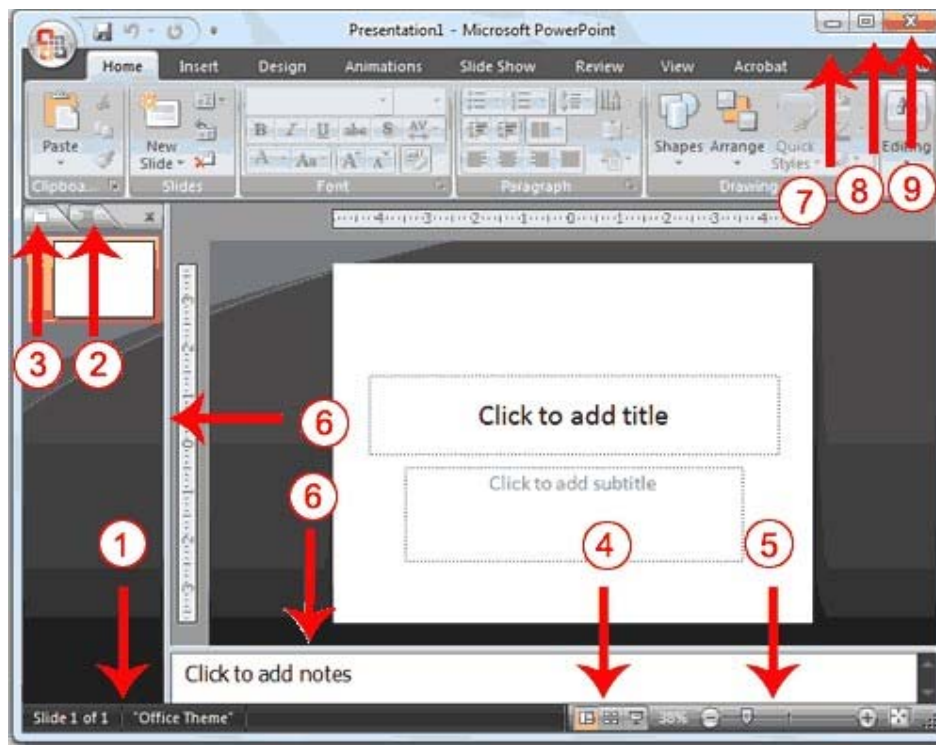
1	Slide
2	Placeholders
3	Notes

Slides appear in the center of the window. You create your presentation on slides.

Placeholders hold the objects in your slide. You can use placeholders to hold text, clip art, charts, and more.

You can use the notes area to create notes to yourself. You can refer to these notes as you give your presentation.

Status Bar, Tabs, View Buttons, and More



1	Status Bar	6	Vertical & Horizontal Splitter Bars
2	Outline Tab	7	Minimize Button
3	Slides Tab	8	Maximize/Restore Button
4	View Buttons	9	Close Button
5	Zoom		

The Status bar generally appears at the bottom of the window. The Status bar displays the number of the slide that is currently displayed, the total number of slides, and the name of the design template in use or the name of the background.

The Outline tab displays the text contained in your presentation. The Slides tab displays a thumbnail of all your slides. You click the thumbnail to view the slide in the Slide pane.

The View buttons appear near the bottom of the screen. You use the View buttons to change between Normal view, Slider Sorter view, and the Slide Show view.

Normal View

Normal view splits your screen into three major sections: the Outline and Slides tabs, the Slide pane, and the Notes area. The Outline and Slides tabs are on the left side of your window. They enable you to shift between two different ways of viewing your slides. The Slides tab shows thumbnails of your slides. The Outline tab shows the text on your slides. The Slide pane is located in the center of your window. The Slide pane shows a large view of the slide on which

you are currently working. The Notes area appears below the Slide pane. You can type notes to yourself on the Notes area.

Slide Sorter View

Slide Sorter view shows thumbnails of all your slides. In Slide Sorter view, you can easily add, delete, or change their order of your slides.

Slide Show





Use the Slide Show view when you want to view your slides, as they will look in your final presentation. When in Slide Show view:

- | | |
|---------------|---|
| Esc | Returns you to the view you were using previously. |
| Leftclicking | Moves you to the next slide or animation effect. When you reach the last slide, you automatically return to your previous view. |
| Rightclicking | Opens a pop-up menu. You can use this menu to navigate the slides, add speaker notes, select a pointer, and mark your presentation. |

Zoom

allows you to zoom in and zoom out on the window. Zooming in makes the window larger so you focus in on an object. Zooming out makes the window smaller so you can see the entire window.

You can click and drag the vertical and horizontal splitter bars to change the size of your panes.

You use the Minimize button  to remove a window from view. While a window is minimized, its title appears on the taskbar. You click the Maximize button  to cause a window to fill the screen. After you maximize a window, clicking the Restore button returns  the window to its former smaller size. You click the Close button  to exit the window and close the program.

Creating Your First PowerPoint Presentation

You create your PowerPoint presentation on slides. You use layouts to organize the content on each slide. PowerPoint has several slide layouts from which to choose.

Themes are sets of colors, fonts, and special effects. Backgrounds add a colored background to your slides. You can add themes and backgrounds to your slides. After you complete your slides, you can run your presentation.

Create a Title Slide

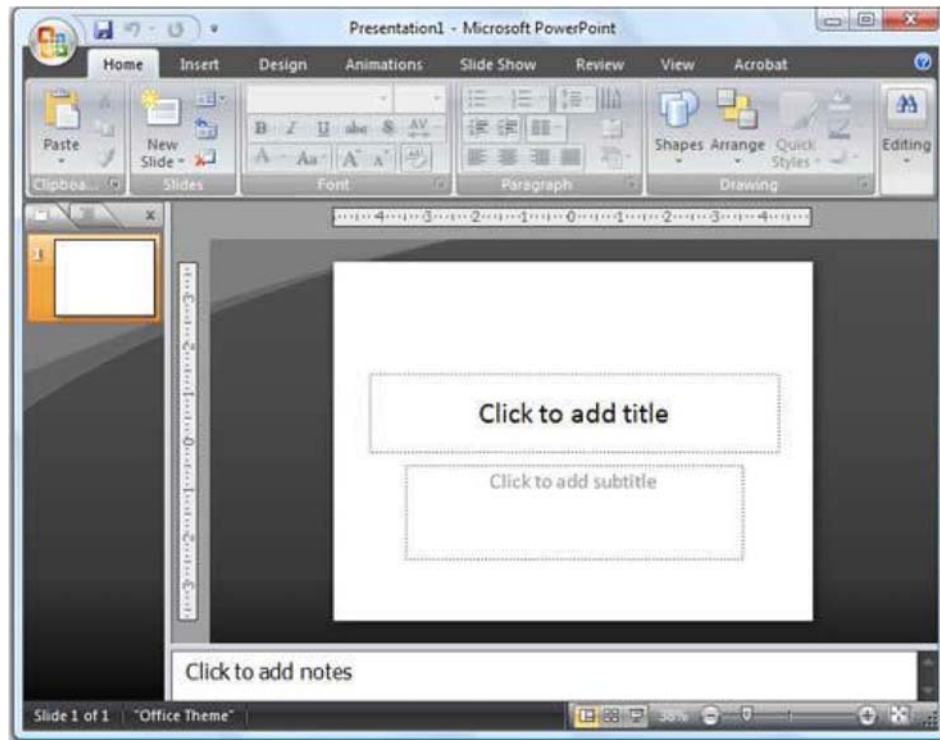
When you start PowerPoint, PowerPoint displays the title slide in the Slide pane. You can type the title of your presentation and a subtitle on this slide. To enter text:

- Click and type the title of your presentation in the "Click to add title" area. □
- Click and type a subtitle in the "Click to add subtitle" area.

If you do not wish to use the title slide, click the Delete Slide button  in the Slides group on the Home tab.

Create a Title Slide

1. Open PowerPoint. You are presented with a title slide.



2. Enter the information shown here. Type **College Scholarships and Financial Aid** in the Click to Add Title text box. Type **Paying for College** in the Click to Add Subtitle text box.

**College Scholarships and
Financial Aid**
Paying for College

Create New Slides

After completing your title slide, you can create additional slides. To create a new slide:

1. Choose the Home tab.

2. Click the New Slide button **New Slide ▾** in the Slides group. The Office Theme dialog box appears and displays several layout templates.
3. Click the layout you want. The layout appears in the Slide pane of the PowerPoint window.



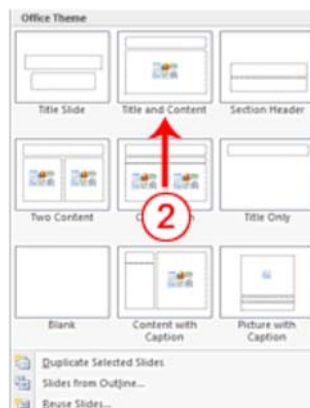
3. To add text, click inside the placeholder and type.
4. To add an additional slide to your presentation, do one of the following:

Right-click the slide layout. A menu appears. Click Layout and then click the layout you want.

Choose the Home tab, click the New Slide button **New Slide ▾**, and then choose the slide layout you want.

Create New Slides

1. Choose the Home tab.
2. Click the New Slide button **New Slide ▾** in the Slides group. The Office Theme dialog box appears.
3. Click the Title and Content Layout. The slide appears on the Slides tab.







4. Enter the information shown here. Type **Here is what to do:** (including the colon) in the Click to Add Title text box. Type the bulleted text in the Content text box.

Here is what to do:

- Start saving early
- Apply for financial aid

Create an Outline

If you need to present the information in your slide in outline form, you can easily create an outline by using the Increase List Level button  to create a hierarchy.


1. Choose the Home tab.
2. Click the New Slide button  in the Slides group. The Office Theme dialog box appears.
3. Click the Title and Content layout.
4. Enter the information shown here. Click the Increase List Level button  in the Paragraph group to indent the bullets for Stafford Loans and PLUS Loans. If you ever need to decrease an indent, use the Decrease List Level button  in the Paragraph group.

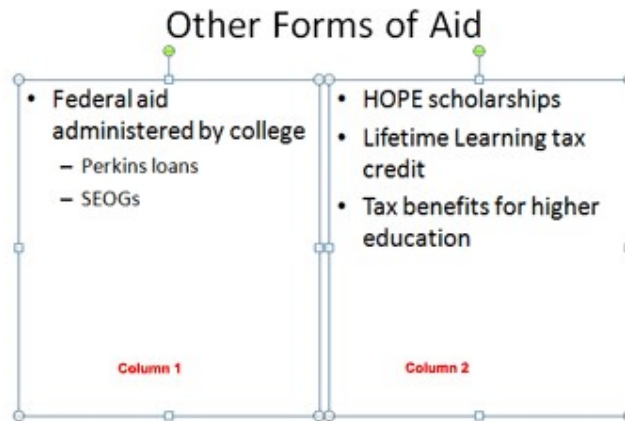
Where to Apply for Aid

- Pell grants
- Work study programs
- Federal loans
 - Stafford loans
 - PLUS loans

Use Two-Column Text

You can also place text in two separate columns.

1. Choose the Home tab.
 2. Click the New Slide button  in the Slides group. The Office Theme dialog box appears.
 3. Click the Two Content layout.
 4. Enter the information shown here.
-



Make Changes to Your Slides

After creating a slide, if you want to add text:

1. Place the mouse pointer at the point at which you would like to add text.
2. Type the information you want to add.

If you would like to change text:


1. Select the text you want to change.
2. Type the new text.

You can use the Backspace key to delete text. You can also delete text by highlighting the text and pressing the Delete key.


Apply a Theme

A theme is a set of colors, fonts, and special effects. Themes provide attractive backgrounds for your PowerPoint slides.


To apply a theme to all of the slides in your presentation:

1. Choose the Design tab.
2. Click the More button  in the Themes group.
3. Click the design you want.

To apply a theme to selected slides:


1. Click the Slides tab, located on the left side of the window.
2. Hold down the Ctrl key and then click to select the slides to which you want to apply a theme.
3. Choose the Design tab.
4. Click the More button  in the Themes group.
5. Right-click the theme you want to apply. A menu appears.
6. Click Apply to Selected Slides. Excel applies the theme to the slides you selected.

You can add a dramatic effect to your theme by applying a background.

1. Choose the Design tab.
2. Click the Background Styles button  Background Styles ▾.
3. Click the background you want.

Apply a Theme




1. Choose the Design tab.
2. Click the More button  in the Themes group.



3. Click the theme you want. PowerPoint applies the theme to all of the slides in your presentation.

Add a Background




1. Choose the Design tab.
2. Click the Background Styles button  Background Styles ▾.
3. Click the background you want. PowerPoint applies the background to your slides.

Run Your PowerPoint Slide Show

After you create your slides, you can run your slide show:

1. Do any one of the following:

- Press F5.
- Choose the Slide Show tab. Click the From Beginning button  in the Start Slide Show group.
- Click the Slide Show icon in the bottom-right corner of your screen.

Your slide show appears on your screen.

Navigating the Slide Show	
Task	Procedure
Go to the next slide.	Do one of the following: <ul style="list-style-type: none"> • Press the Right Arrow key. • Press the Enter key. • Press the Page Down key. • Left-click the slide.
Go to the previous slide.	Do one of the following: <ul style="list-style-type: none"> • Press the Left Arrow key. • Press the Backspace key. • Press the Page Up key.
End the slide show and return to PowerPoint.	Press the Esc key.

Animations, Transitions, Spell Check, Outline Tab, Slides Tab and Sorter View


Animations control how objects move onto, off of, and around your slides. Transitions control how your presentation moves from one slide to the next. This lesson teaches you how to create animations and transitions. It also teaches how to spell-check your document, how to use the Outline and Slides tabs, how to use Sorter view, and how to print.

Add Animations




You can animate the objects on your PowerPoint slides. PowerPoint provides four types of animations: Entrance, Emphasis, Exit, and Motion Paths. An Entrance animation determines the manner in which an object appears on a slide; for example, an object can move onto a slide. An Emphasis animation does something to draw attention to an object; for example, the object can become larger. An Exit

animation determines the manner in which an object leaves a slide; for example, an object can move off a slide. A Motion Paths animation determines how an object moves around a slide; for example, an object can move from left to right.

After you add an animation, you can use the Custom Animation pane to modify it by choosing an effect. Choosing an effect enables you to define what starts the animation, its properties (such the direction from which an object moves onto the slide), and control the speed of the animation. In addition, you can have an animation start when you click the mouse, start along with the previous animation, or start at a specified time after the previous animation.


If the Auto Preview box is checked on the Custom Animation pane, PowerPoint provides you with preview of your animation after you create it and each time you modify it. You can also use the Play button  **Play** on the Custom Animation pane to preview an animation.

To choose an effect:

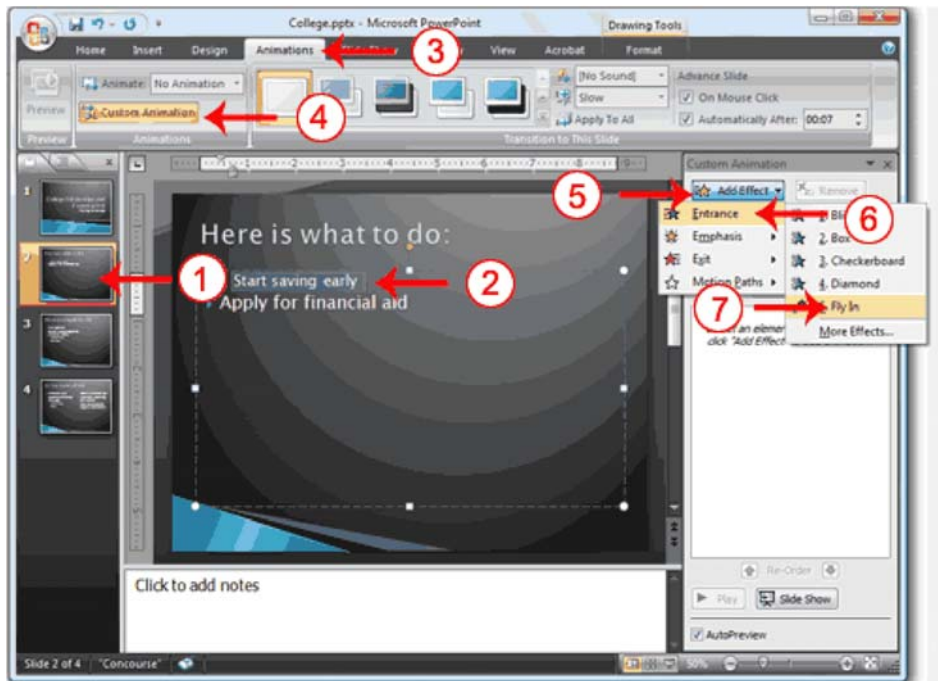
1. Select the object you want to animate.
2. Choose the Animations  tab.
3. Click the Custom  Custom Animation button . The Custom Animation pane appears.
4. Click the Add Effect  **Add Effect** . A menu appears. button
5. Choose the type of effect you want. A submenu appears. 6. Click the effect you want. PowerPoint applies the effect.


To modify an effect:

1. Click the down arrow next to the Start field on the Custom Animations pane and then select the start method you want.
2. Click the down arrow next to the Property field on the Custom Animations pane and the select the property you want. The Property field might be labeled Direction, Size, or some other property.
3. Click the down arrow next to the Speed field on the Custom Animations pane and then select the speed you want to apply to your animation.

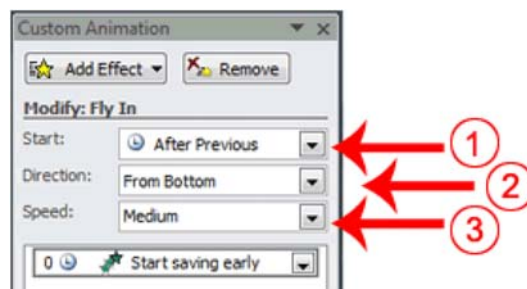
To preview the animation, click the Play button  **Play** on the Custom Animations pane.

Add an Animation to a Slide



1. Click Slide 2 on the Slides tab.
2. Select "Start saving early." 3. Choose the Animations tab.
4. Click the Custom Animation button appears.
5. Click the Add Effect  Add Effect. A menu appears.
6. Choose Entrance. A submenu appears.
7. Click Fly In. PowerPoint applies the effect. If the Auto preview box is checked, PowerPoint automatically provides you with a preview of the animation.


Modify the Effect



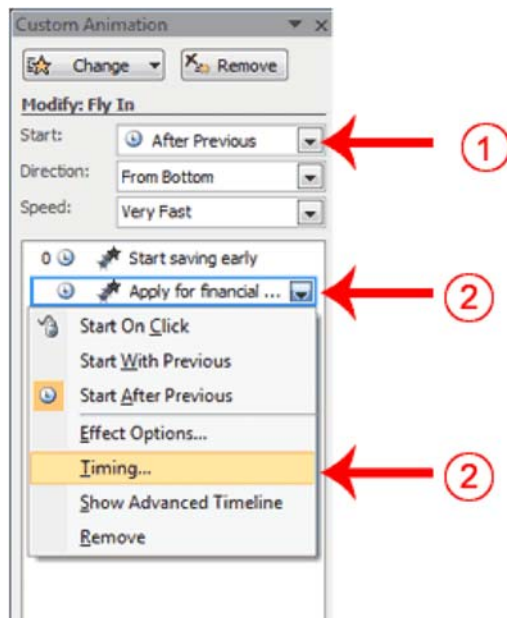
1. Click the down arrow next to the Start field and then select After Previous.
2. Click the down arrow next to the Direction field and then select From Bottom.
3. Click the down arrow next to the Speed field and then select Medium.

Add Another Animation

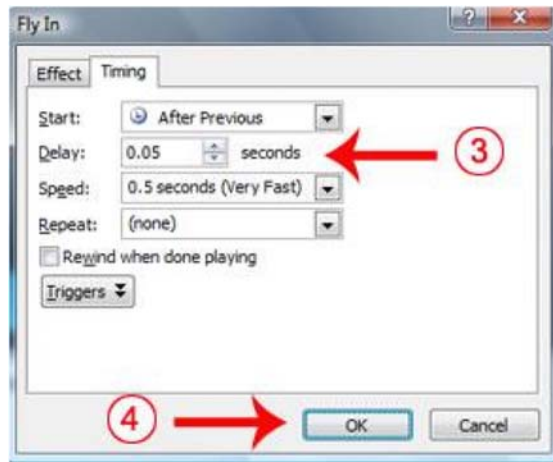


1. Select "Apply for financial aid."
2. Click the Add Effect button  Add Effect. A menu appears.
3. Choose Entrance. A submenu appears.
4. Click Fly In. PowerPoint applies the effect. If the Auto preview box is checked, PowerPoint automatically provides you with a preview of the animation.

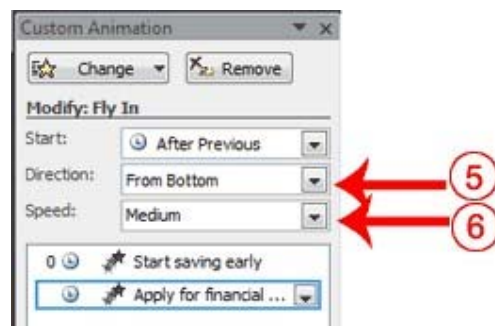
Modify the Animation




1. Click the down arrow next to the Start field and then select After Previous. The Apply for Financial Aid field appears in the center of the Custom Animation pane.
2. Click the down arrow next to the Apply for Financial Aid field and then click Timing. The Fly In dialog box appears.



3. Type **0.05** in the Delay text box.
4. Click OK.




5. Click the down arrow next to the Direction field and then select From Bottom.
6. Click the down arrow next to the Speed field and then select Medium. If the Auto preview box is checked, PowerPoint automatically provides you with a preview of the animation. You can click the Play button  on the Custom Animation pane at anytime to preview an animation.

Add Transitions



Transitions determine how your presentations move from one slide to the next. For example, a slide can move up onto the screen and replace the previous slide. PowerPoint provides several transition methods. You can add sound to a transition and you can control its speed. You can apply a transition to selected slides or to all of the slides in your presentation.

A transition can occur when the presenter clicks the mouse or after the amount of time you specify.

To apply a transition to selected slides:

1. On the Slides tab, hold down the Ctrl key and then click the slides to which you want to apply the transition.
2. Choose the Animations tab.
3. Click the More button  in the Transition to this Slide group. A menu of transitions appears.
4. Click the transition you want to apply. PowerPoint applies the transition. As you roll your pointer over each transition, PowerPoint provides you with a live preview of the transition.

To apply a transition to all slides:

1. Choose the Animations tab.
2. Click the More button  in the Transition to this Slide group. A menu of transitions appears.
3. Click the transition you want to apply. As you roll your pointer over each transition, PowerPoint provides you with a live preview of the transition.
4. Click the Apply to All button  in the Transition to This Slide group.

To add a sound to a transition:

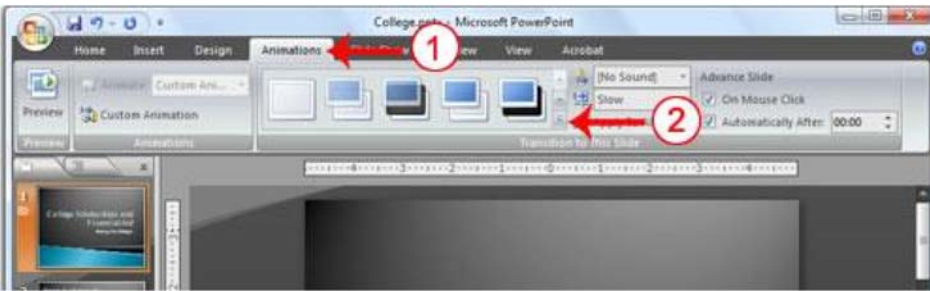
1. Choose the Animations tab.
2. Click the down arrow next to the Transition Sound field and then click the sound you want. As you roll your pointer over each sound, PowerPoint plays the sound.


To set the speed of a transition:

1. Choose the Animations tab.
2. Click the down arrow next to the Transition Speed field and then click the speed you want.

If you want the transition to occur after the presenter clicks the mouse, check the On Mouse Click check box. If you want a transition to occur after a specified period of time, check the Automatically After check box and then specify the amount of time you want to elapse before the transition occurs. The On Mouse Click check box and the Automatically After check box are both located on the Animations tab in the Transition to This Slide group.

Add Transitions



1. Choose the Animations tab.
2. Click the More button  in the Transition to this Slide group. A menu of transitions appears.



3. Click the Push Up transition. As you roll your pointer over each transition, PowerPoint provides you with a live preview of the transition.

Add Sound and Set the Speed

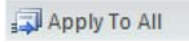


1. Click the down arrow next to the Transition Sound field and then click Click.
2. Click the down arrow next to the Transition Speed field and then click Slow.

Advance Slide




1. Check the On Mouse Click check box.

2. Click the Automatically After check box.
3. Type **00:07** in the Automatically After text box.
4. Click the Apply to All button . PowerPoint applies all of your changes to all of the slides.
5. Click Slide 1 on the Slides tab.
6. Type **00:03** in the Automatically After text box. PowerPoint changes the timing for Slide 1.

Spell Check

PowerPoint checks your spelling as you type and displays errors with a red wavy line under the misspelled word. You can right-click and then select the correct spelling from the list of offerings on the menu that appears or select Spelling to open the Spelling dialog box. If you need to, you can initiate a spell check anytime you like. To start a spell check, do one of the following:

- Press F7.
- Choose the Review tab and then click the Spelling button .

If the spell check finds a possible spelling error, the Spelling dialog box opens with the spelling error highlighted. You can respond in several ways.



Response	Procedure
Do not change spelling.	Click Ignore.
Correct spelling.	<ol style="list-style-type: none"> 1. Click the correct spelling in the Suggestions box. 2. Click Change.
Add to dictionary.	Click Add.
Word is correct. Do not change presentation.	Click Ignore All.
Word is incorrect. Change entire presentation.	Click Change All.

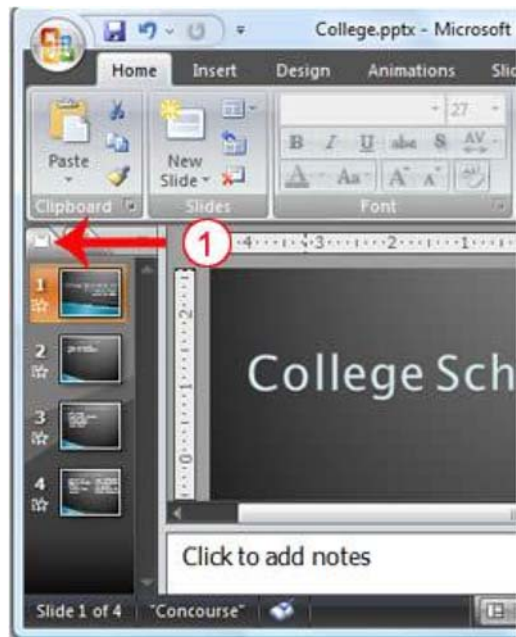
Spell Check

1. Press F7
2. Correct any spelling errors PowerPoint finds. If PowerPoint does not find any errors, the Spelling Check is Complete message box appears. Click OK.

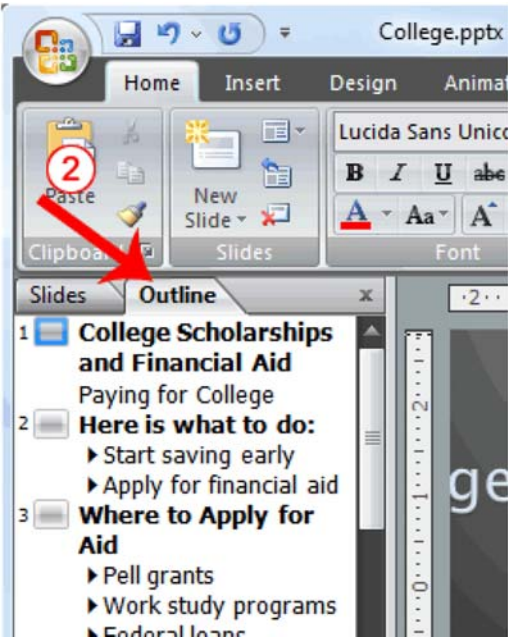
Use the Outline and Slides Tabs

By default, the Outline and Slides tabs are located on the left side of your PowerPoint window. The Outline tab displays the text contained in your presentation. The Slides tab displays a thumbnail of all your slides. You click the thumbnail to view the slide in the Slide pane.

Use the Outline and Slides Tabs





1. Choose the Slides tab to view thumbnails of your slides.





2. Choose the Outline tab to view the text of your presentation as an outline.



Use Slide Sorter View

After you have created your PowerPoint slides, you can move, cut, copy, paste, duplicate, navigate, and view them in Sorter view. To view the slides in Sorter view, do one of the following:

- Choose the View tab and then click the Slide Sorter button  in the Presentation Views group.
- Click the Slide Sorter button  in the bottom-right corner of the PowerPoint window.

Slide Sorter View	
Task	Procedure
Move to first slide.	Use Ctrl+Home.
Move to last slide.	Use Ctrl+End.
Move to next slide.	Use the right arrow.
Move to previous slide.	Use the left arrow.

Select a slide.	Single-click the slide.
Open a slide in Normal view.	Double-click the slide.
Select slides.	<p>Select a single slide:</p> <ol style="list-style-type: none"> 1. Click the slide you want to select.
Slide Sorter View	
Task	Procedure
	<p>Select multiple slides:</p> <ol style="list-style-type: none"> 1. Hold down the Ctrl key. 2. Click the slides you want to select.
Delete a slide.	<ol style="list-style-type: none"> 1. Select the slide or slides you want to delete. 2. Press the Delete key.
	<ol style="list-style-type: none"> 1. Select the slide or slides you want to delete. 2. Choose the Home tab and then click the Delete button .
Copy a slide.	<ol style="list-style-type: none"> 1. Select the slide. 2. Choose the Home tab. 3. Click the Copy button  in the Clipboard group.
	<ol style="list-style-type: none"> 1. Select the slide. 2. Press Ctrl+C.

Paste a slide.	<ol style="list-style-type: none"> 1. Select the slide after which you want the new slide or slides to appear. 2. Choose the Home tab. 3. Click the Paste button  in the Clipboard group.
	<ol style="list-style-type: none"> 1. Select the slide after which you want the new slide or slides to appear. 2. Press Ctrl+V.
Cut a slide.	<ol style="list-style-type: none"> 1. Select the slide or slides you want to cut. 2. Choose the Home tab. 3. Click the Cut button  in
Slide Sorter View	
Task	Procedure
	the Clipboard group.
	<ol style="list-style-type: none"> 1. Select the slide or slides you want to cut. 2. Press Ctrl+X.
Move a slide.	<ol style="list-style-type: none"> 1. Select the slide (or slides) you want to move. 2. Drag it to the new location.
Duplicate a slide.	<ol style="list-style-type: none"> 1. Select the slide (or slides) you want to duplicate. 2. Press Ctrl+D.

Use Slide Sorter View



1. Choose the View tab.
2. Click Slide Sorter in the Presentation Views group.
3. Double-click a slide to view it in Normal view.

Action Buttons



In PowerPoint, you have the ability to link to a webpage, email address, file, slide in the same presentation, and slide in a different presentation. You can do all of this using two tools called **hyperlinks** and **action buttons**.

In this lesson, you will learn how to insert hyperlinks using text and objects, as well as how to insert an action button.

Inserting action buttons

In addition to hyperlinks, another tool you can use to connect to a webpage, file, email address, or slide is called an **action button**, or action link. **Action buttons** are **built-in button shapes** you can add to a presentation and use as hyperlinks. When someone clicks or moves over the button, the action can occur.

Hyperlinks and action buttons are closely connected and can do many of the same things. Action buttons are used most for self-running presentations, such as those at a trade show booth or kiosk.

To insert an action button on all slides:

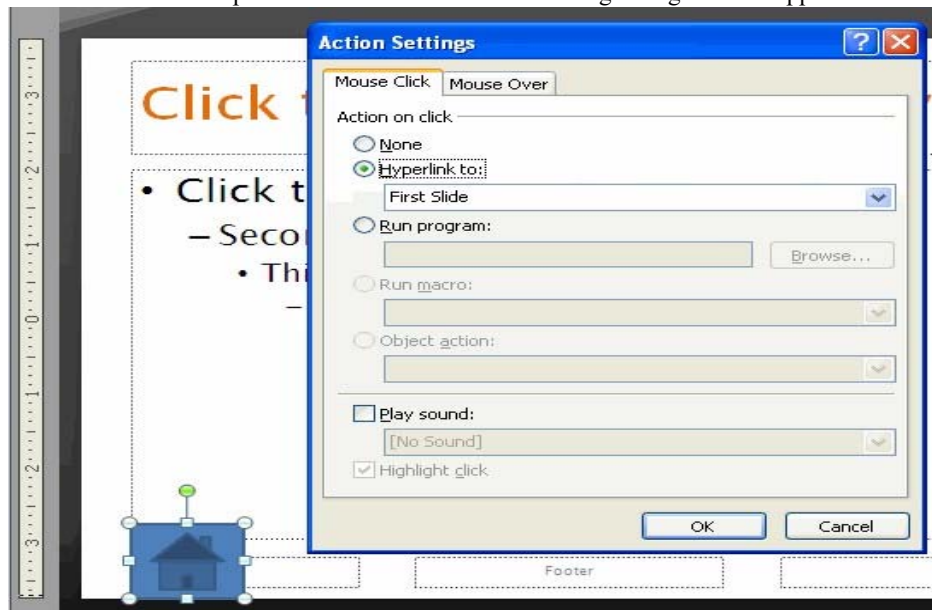
- Select the **View** tab.
- Click the **Slide Master** command in the Presentation Views group. The slide master view will appear.
- Select slide 1, the slide master. Changes to this slide will appear on all slides in the presentation.
- Select the **Insert** tab.
- Click the **Shapes** command in the Illustrations group.



- Select an **action button** from the bottom of the list. In this example, we will select the **Home** action button.

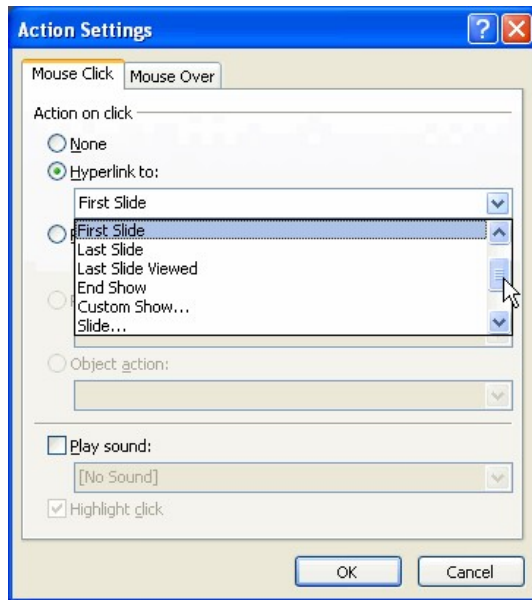


- Insert the shape onto the slide. The Actions Setting dialog box will appear.

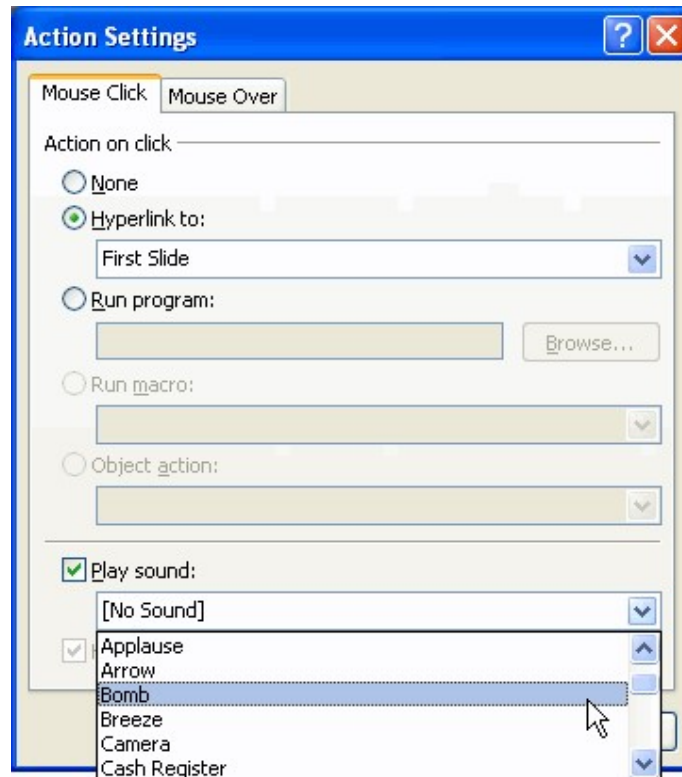


o Select the **Mouse Click** or **Mouse Over** tab. Use the Mouse Click tab to set actions to occur when you click, and use the Mouse Over tab to set actions to occur when you move the cursor over the action button. In this example, we will leave the Mouse Click tab selected.

- o In the **Action on click** section, click **None** or **Hyperlink to:** o If you click **None**, the shape will have no action associated with it.
- o If you click **Hyperlink to:**, select an option from the menu. The hyperlink options work the same for action buttons as they do for traditional hyperlinks.



- Click **Play Sound** if you wish to play a sound when the action button is clicked.
- Select a sound from the drop-down menu.



- Click **OK**.

Action buttons do not have to be inserted on master slides. You can insert an action button on one slide, if you wish.

To edit the action button:

- Select the action button.
- Select the **Insert** tab.
- Click the **Action** command in the Links group. The Actions Settings dialog box will appear.



- Edit the action or hyperlink.
- Click **OK**.

When the action button is selected, the **Format** tab is available because it is a shape. You can change the shape style or color so it matches the color scheme of the slide from this tab.

Lab Tasks

(Microsoft POWERPOINT)

Exercises

Exercise 1

Create a Power Point presentation that contains:

- Minimum ten slides
- First slide must contain “Title” of your presentation topic, your name; roll number, batch and department.
- The next slide must contain Introduction about the selected topic • Last slide must contain “Conclusion”
- Use bullets to include text in the slides Your slides must have slide number.
- Try as much features as possible Make use of Transitions and Slide Layout
 - Select a picture or shape.
- Apply an **animation effect** using the options in the Animation group.
- Change the **speed** of the effect in the Custom Animation task pane.
- Apply an **animation effect** to text.
- Apply two or more animation effects on one slide.
- Make use of Action buttons and hyperlinks
- Add a short video of computers in last conclusion slide